



BTM Equipment, INC dba TK EQUIPMENT

14419 Atlanta dr
Laredo, TX, 78041
Tax ID: 33-1173226

HOW TO

Contact: Octavio Chavez
✉: manager@tkequip.com
☎: (956) 796 9411
📠: (956) 462 2500

HOW TO: REPLACE A CONCRETE MIXER POLY DRUM

1. Loose ring gear bolts and nuts.
2. Take off ring gear.
3. Loose drum mounting bolts and nuts.
4. Remove drum
5. Place new drum
6. Bore bottom part of the drum, taking as a guide the holes on the mounting.



Drill on the marked dot
using the holes on the
mounting Frame as a
guide.



BTM Equipment, INC dba TK EQUIPMENT

14419 Atlanta dr
Laredo, TX, 78041
Tax ID: 33-1173226

HOW TO

Contact: Octavio Chavez

✉: manager@tkequip.com

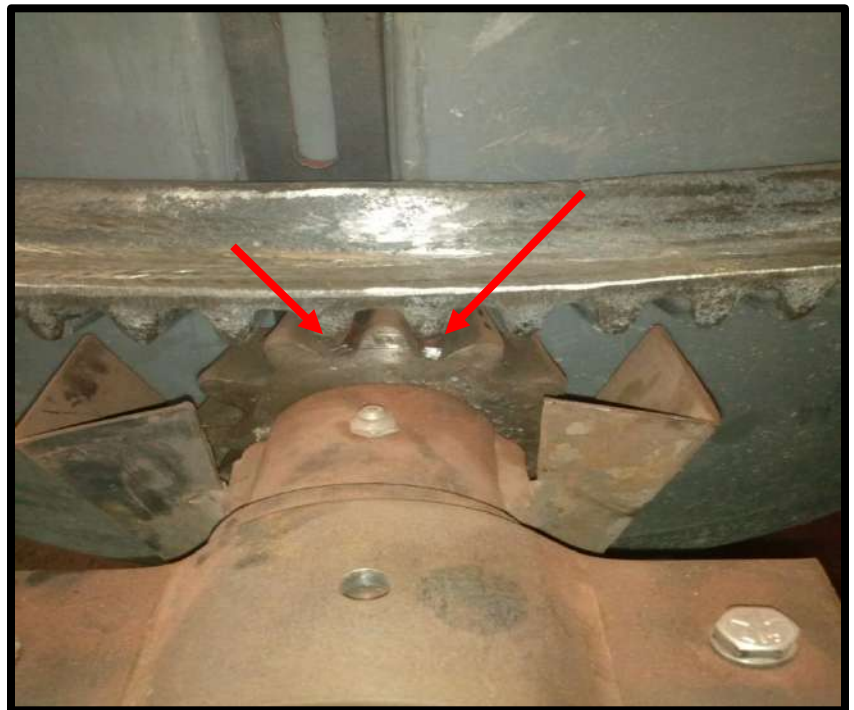
☎: (956) 796 9411

📠 : (956) 462 2500

7. Place the screws, washer and nuts and tighten.
* Note: check that the drum is really stick to the mounting on all sides. You should always bore one side of the drum and then the opposite side, and so on.



8. Place gear ring on the drum.
9. Place 3/16 spacers between the pinion and the gear ring.
10. Center gear ring to the drum.





BTM Equipment, INC dba TK EQUIPMENT

14419 Atlanta dr
Laredo, TX, 78041
Tax ID: 33-1173226

HOW TO

Contact: Octavio Chavez
✉: manager@tkequip.com
☎: (956) 796 9411
📠: (956) 462 2500

11. Mark gear ring, put numbers and match the numbers on the mounting and on the gear ring. Do this on the four attachment points of the mounting. Take off the gear ring and bore it on the marks.



12. Place again the gear ring on the drum.
13. Place 3/16 spacers between the pinion and the gear ring.
14. Place 1" key between the drum and the ring gear to avoid movement when you bore the drum.
15. Bore the drum taking the guides of the holes on the gear ring.
16. Place screws, washer and nuts and tighten a little.
17. Bore opposite side and place screws, washer and nuts. And so on until you bore all for points.

