

EQUIPMENT

Building the American Dream
MORTAR MIXER – KEY FEATURES



Steel & Poly Drum Mortar Mixers

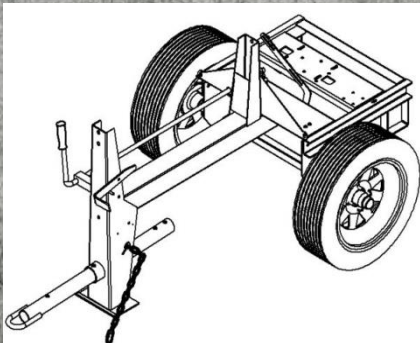
MM6(P) / MM8(P) / MM6 / MM8 / MM10 / MM12 / MM12G / HM12 / HM16

WHAT MAKES TK MIXERS THE BEST MORTAR MIXER?

1) TK Mixers feature a cast iron pillow block and trunnion, secured with 4 bolts for added strength, compared to the tube and welded steel assembly used on competitor's models.



2) Unlike other mixers, the engagement handle on TK mortar mixers are routed through the frame tube to protect it from dust, mortar, weather related issues, and forklift damage and it is located on the front leg for easier operation when dumping the mix.



3) TK uses a $\frac{1}{2}$ " solid steel handle that is attached to the drum with an offset bolt pattern giving it more durability and strength compared to a flattened tube type handle. TK's handles come with plastic grips for ergonomic control when dumping the drum.



4) The main frame on the TK mixers is built from a single piece of steel box tubing for added strength, compared to a 2-pieces frame. The tow hitch features an oversized hitch pin and safety bolt along with a heavier gauge safety chain for added safety and stability while towing.



5) TK's 46" square shaped and axle design uses 4 gussets, making the axle much stronger and safer than models made of fewer to no gussets.



6) We use a welded grid in our mixer compared with electric heat welding grids which typically do not last as long.



7) TK's drum paddles are designed with a locked paddle shaft with notches and heavy-duty clamps to secure and keep the mixing paddles in the correct position for a long time unlike round keyed shafts that allow the paddles to shift. We also use 3/8" thick rubber wipers compared to 1/8" thick wipers used by competitors. Optional spiral blades can be provided for the same cost on all our mortar mixers. (except poly)



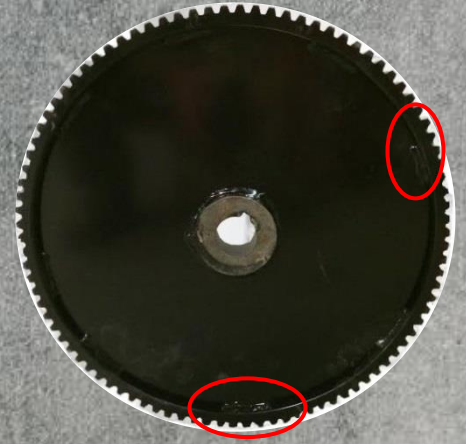
8) We use spring loaded steel latches for longer life vs. rubber hood latches that become brittle due to exposure to weather.



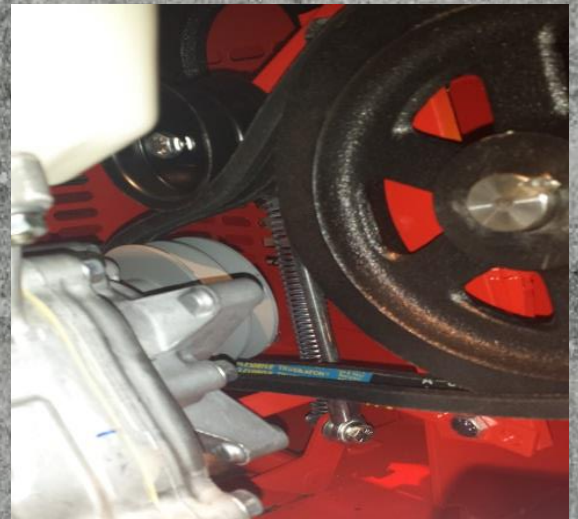
9) TK's engine mount is part of the mixer frame and the paddles are engaged by the movement of a clutch (idler bearing). Other brands tilt the engine to engage the paddles. With that design, if left disengaged during towing, the engine can bounce up and down on the tilting plate, decreasing engine life.



10) TK's 1-piece cast iron bull gear is stronger than the 3-piece welded bull gear used on most competitors' mixers. TK's transmission is securely locked and mounted on the frame to eliminate any play, reducing wear and tear to the assembly.



11) TK's timing belt, is designed to reduce belt slipping and increase belt life. In addition, the idler bearing is 2 times larger than the competition's comparable units, further increasing the durability and life of this assembly.



12) TK mortar mixers 3-1/2 bag steel drum are made out of a 3/16" drum wrap compared to 1/8" of our competitors

13) TK poly drum mixers are made of durable 3/8" polyethylene making the clean-up effort much easier and less time consuming.



CAPACITY	6, 8, & 12 cu. ft.	7, 9 & 12 cu. ft.	6, 8, 9.5, 12 & 16 cu. ft.
DRUM WRAP GAUGE	1/8" 7 & 9 cu. ft. 3/16" 12 cu. ft.	1/8" 7 & 9 cu. ft. 3/16" 12 cu. ft.	1/8" on 6 & 8 cu. ft. 3/16" on 9.5, 12 & 16 cu. ft.
END PLATES GAUGE	3/16" All Models	3/16" All Models	3/16" on 6, 8 & 9.5 cu.ft. 1/4" on 12 & 16 cu.ft.
SPIRAL BLADES OPTION	Yes, with an extra Cost	Not available	Yes, No extra cost
WELDED GRID	Electric Heat welding	Electric Heat welding	MIG Weld
POWER SYSTEM	HONDA with 6:1 Reducer	HONDA with 6:1 Reducer	HONDA with 6:1 Reducer
DRIVE SYSTEM	Multiple piece Bull Gear	Cast Iron Bull Gear	Cast Iron Bull Gear
ENGINE MOUNT	Works as an Idler Clutch (goes up and Down)	Secured on The Mixer Frame for extended life	Secured on The Mixer Frame for extended life
ENGAGEMENT SYSTEM	Frontal Idler Lever to Clutch Through Mixer Frame	Rear Idler Lever to Activate Clutch	Frontal Idler Lever to Clutch Through Mixer Frame
PADDLES MAIN SHAFT	Depends on Model (Round or Square)	Square	Square
RUBBER WIPERS	1/8"	3/8"	3/8"
PADDLES	1" Thickness MIG Weld	Cast Iron	1" Thickness MIG Weld
SEAL SYSTEM	Quadruple Seal & Bearing System Mounted in Hub	Gland Pressure Seal System Mounted on drum Bracket	Quadruple Seal & Bearing System Mounted in Hub
DRUM HUBS	-Housing hub with mortar dropping opening. -3 bolts Pattern	-1 Piece Steel Box Housing with Pressure Springs -4 bolts pattern	-Completely sealed, 1-piece bearing Housing Hub. -4 bolts Pattern
DRUM PILLOW BLOCK	Steel Welded construction	Cast Iron	Cast Iron
BEARINGS & SEALS	Life Time Warranty	Limited Warranty	Life Time Warranty
FRAME	Constructed Box	1 Piece	1 Piece
POCKET LIFTS	Depends on Model	Yes	Yes
AXLE FEATURES	Squared Shape, Reinforced with 2 Gussets, 36" to 46" Adjustable	1-5/8" Round Reinforced with 2 Gussets	Squared Shape Reinforced with 4 Gussets
SAFETY CHAIN SPECS	3/16" thickness	3/16" thickness	5/16" thickness
TIRES	12" for 6cu.ft. 13" for 8 cu.ft. and up	13" For all models	12" for 6cu.ft. 13" for 8 cu.ft. and up
HOOD LATCHES	Rubber	Rubber	Spring Loaded Steel
SHROUD TYPE	Hexagonal (Easy access)	Square	Square
ADDITIONAL FEATURES	-Knee to Dump -Dynamic Mix	U-Bolt End Paddles	-Ergonomic Handles Grips -Customized Specs available prior request
WARRANTY	-6 Months for any manufacturing defect -Life Time Drum Bearings & Seals	6 Months for any manufacturing defect.	-12 Months for any manufacturing defect. -Life Time Drum Bearings & Seals
EXTRA COSTS	Hitch	Hitch	None
PRICE RANGE	\$\$\$\$\$	\$\$\$\$	\$\$\$

MORTAR MIXER

8. cu.ft. HEAVY-DUTY

MODEL MM8 GH8



MORTAR MIXER

8. cu.ft. EASY-CLEAN

MODEL MM8P GH8



MODEL	MM8	MM8P
Batch Capacity bags	2 1/2- 3 bag	2 1/2- 3 bag
Mixing Capacity cu.ft (Lt)	9.45 cu. ft (267)	9.23 cu. ft (261)
Total Capacity cu.ft. (Lt)	8 cu.ft (230)	8 cu.ft (230)
Engine Power	8 HP Honda	8 HP Honda
Drive System	V-Belt to Gears	V-Belt to Gears
Wheel Size	13x6.5 High - Speed	13x6.5 High - Speed
Overall Width in (cm)	51" (129)	51" (129)
Length (Tow pole in) in (cm)	76" (193)	76" (193)
Over Height in (cm)	58" (147)	58" (147)
Operating Weight lbs. (Kg)	772 lbs. (350)	560 lbs. (263)
Drum Wrap	1/8" Wrap	3/8" Complete Drum
Drum End Plates	3/16" Ends	

FRAME

- *Heavy-duty welded "T" frame w/gussets for stability
- *Retracting tow bar w/2" ball hitch receiver
- *Heavy-duty safety grid w/bag cutters
- *Heavy-duty square axle w/double gussets on each side
- *Spring tensioned steel motor hood latches

DRUM

- *MM8 - 3/16" thick steel drum ends & 1/8" drum wrap for extended life
- *MM8P - 3/8" thick high-density polyethylene drum for easy cleaning

PADDLES

- *MM8 / MM8P 4 Replaceable steel paddle blades
- *MM8 / MM8P 1/8" replaceable paddle rubber wipers



8-60 lbs - Pre-mix capacity
5-90 lbs - Pre-mix capacity
2-1/2 Bag - Bulk-mix capacity





sales@tkequip.com

manager@tkequip.com

: (956) 796-9411 Office

: (956) 462-2500 Fax

Building the American Dream