



BTM Equipment, INC dba TK EQUIPMENT

14419 Atlanta dr
Laredo, TX, 78041

HOW TO

✉: manager@tkequip.com

☎: (956) 796 9411

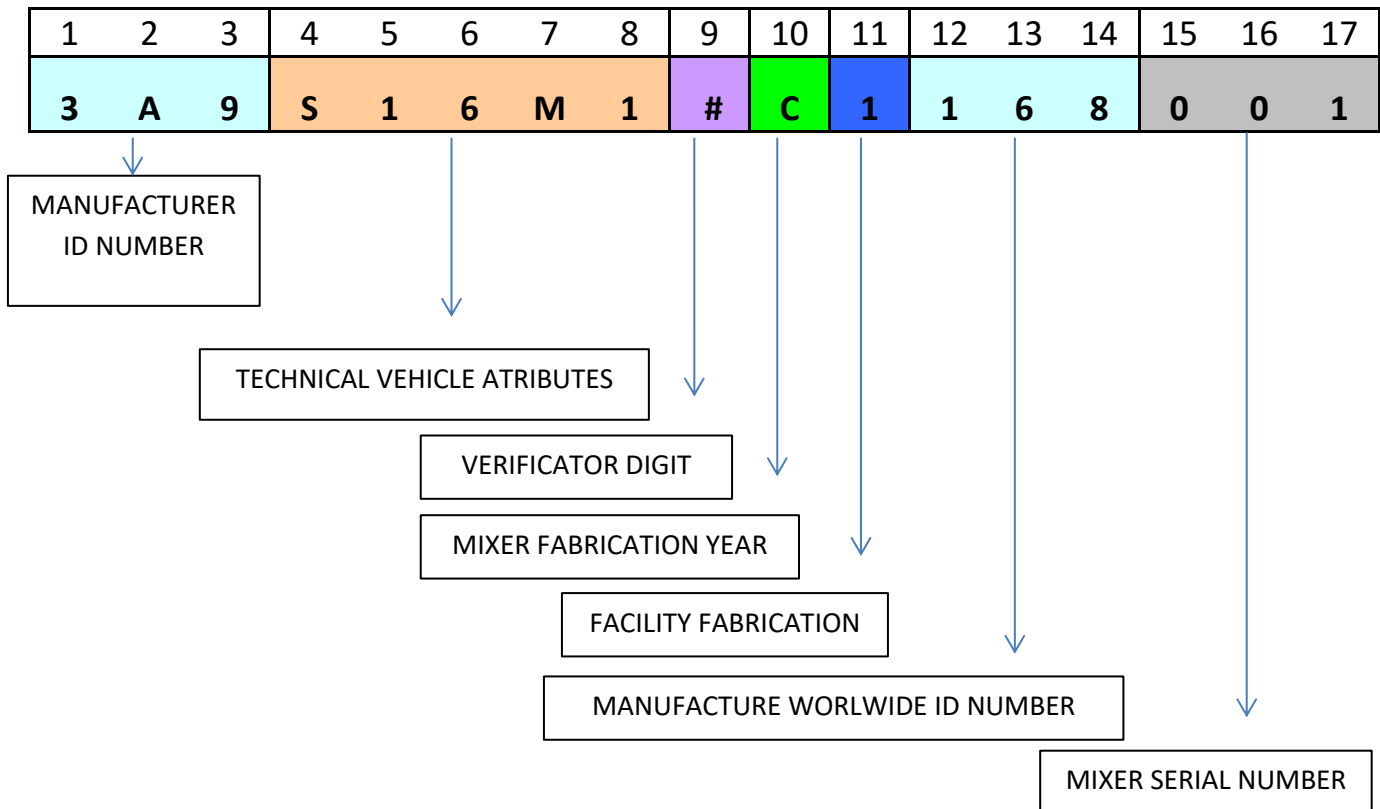
📠: (956) 462 2500

HOW TO: READ A VIN SERIAL NUMBER ON TK MACHINERY

Our Machines come with a 17 digits serial number on every unit. This serial number helps us to track manufacture date on every unit.

Here is an easy explanation in how to determine your mixer manufactured age.

EXAMPLE :



Position 1-3 worldwide manufacturer Identification number (3A9)

Position 4-8 Technical vehicle/trailer characteristics

Position 4 Vehicle Type

R TRAILER

S SEMITRAILER

Position 5-6 Vehicle length, where 07 is the smallest and 40 is the largest.



**BTM Equipment, INC
dba TK EQUIPMENT**

14419 Atlanta dr
Laredo, TX, 78041

HOW TO

✉: manager@tkequip.com

☎: (956) 796 9411

📠: (956) 462 2500

EQUIPMENT IDENTIFICATION NUMBER			
VIN NUMBER IDENTIFICATION	MORTAR MIXERS	VIN NUMBER IDENTIFICATION	CONCRETE MIXERS
25	MM80	36	CM12
26	MM80P	37	CM7
27	MM60	38	CM9
28	MM95-MM10	39	R100TB
29	HM12	40	R150TB
53	MM12	41	R200LX
54	MM12G	42	C9 PRO Series
46	MSM	43	JCS
47	BBC600	44	JCST
48	CM9P	45	MCS1

Position 8 number of axles (from 1 to 3)

1 = 1 axle, 2 = 2 axles, 3 = 3 axles

Position 9 VIN verification number authenticity

Position 10 Year of Manufacturing

YEAR	CODE
2000	1
2001	2
2002	3
2003	4
2004	5
2005	6

2006	7
2007	8
2008	9
2009	A
2010	B
2011	C
2012	D

2013	E
2014	F
2015	G
2016	H
2017	J
2018	K
2019	L

2020	M
2021	N
2022	O
2023	P
2024	Q
2025	R
2026	S

Position 11 Manufacturing Facility

Position 12-14 Manufacturer worldwide identification number

Position 15-17 Consecutive Serial Number(s) of current year.