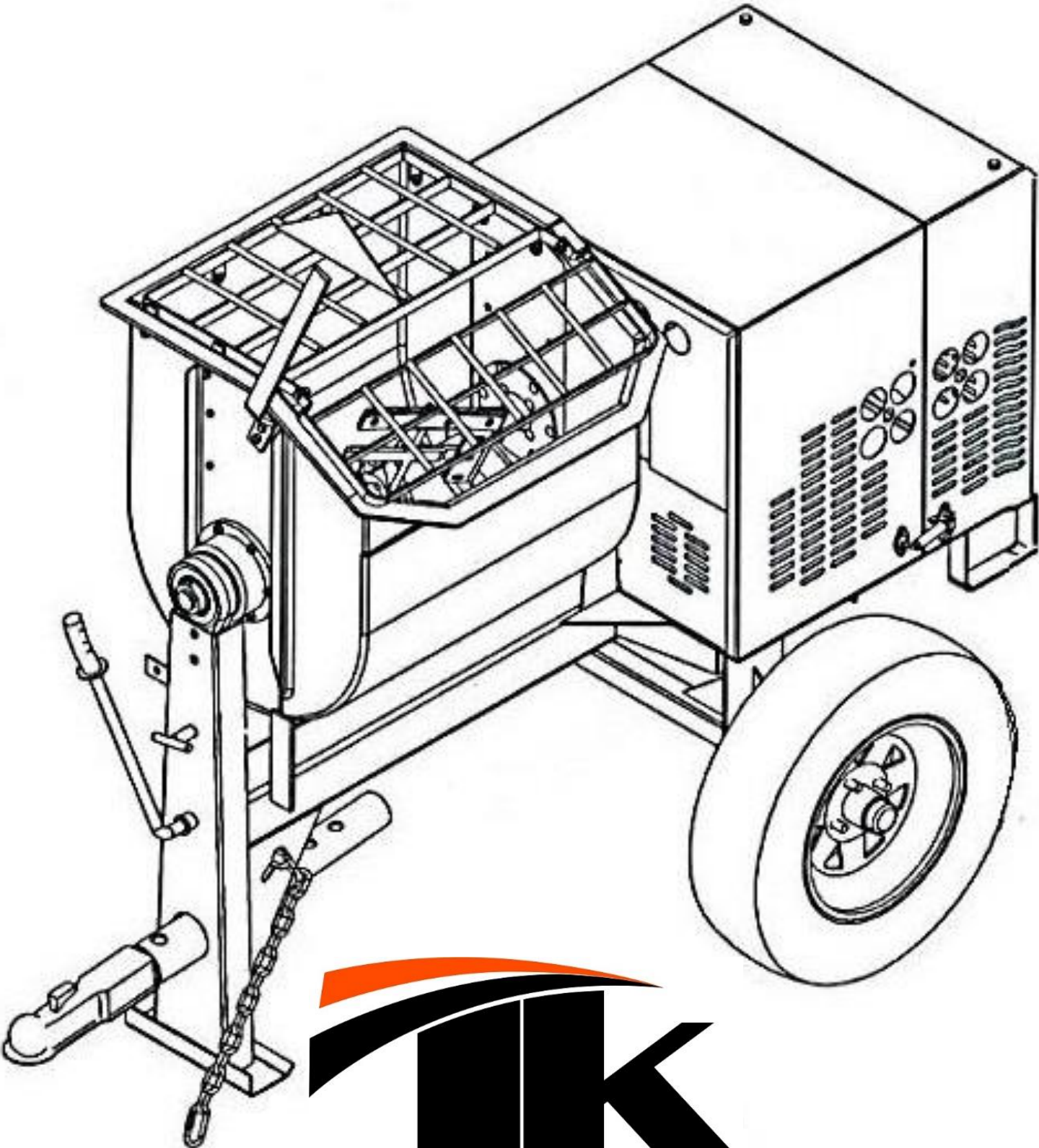
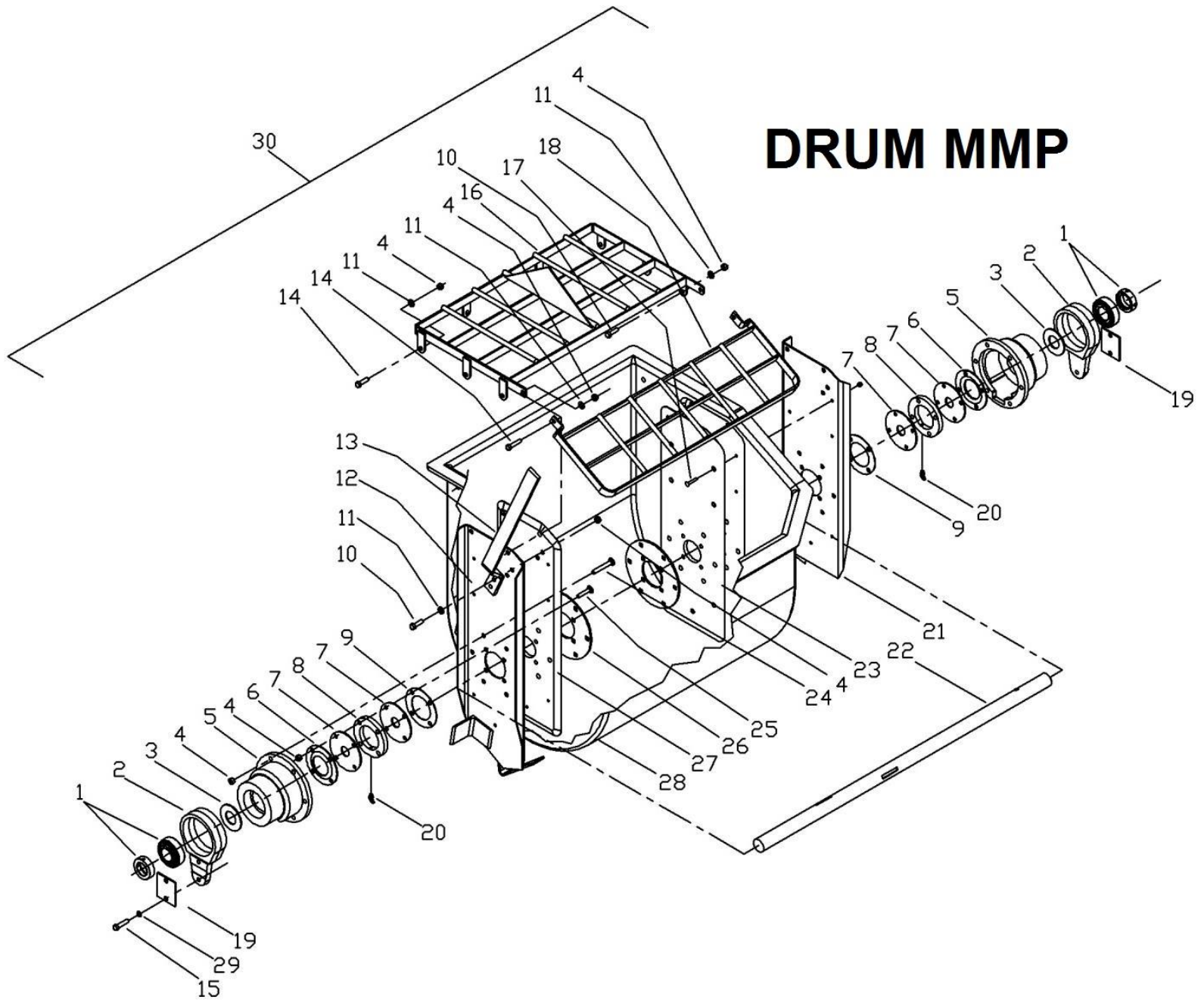


MM6P – MM8P PARTS BREAKDOWN (LIST PRICE)



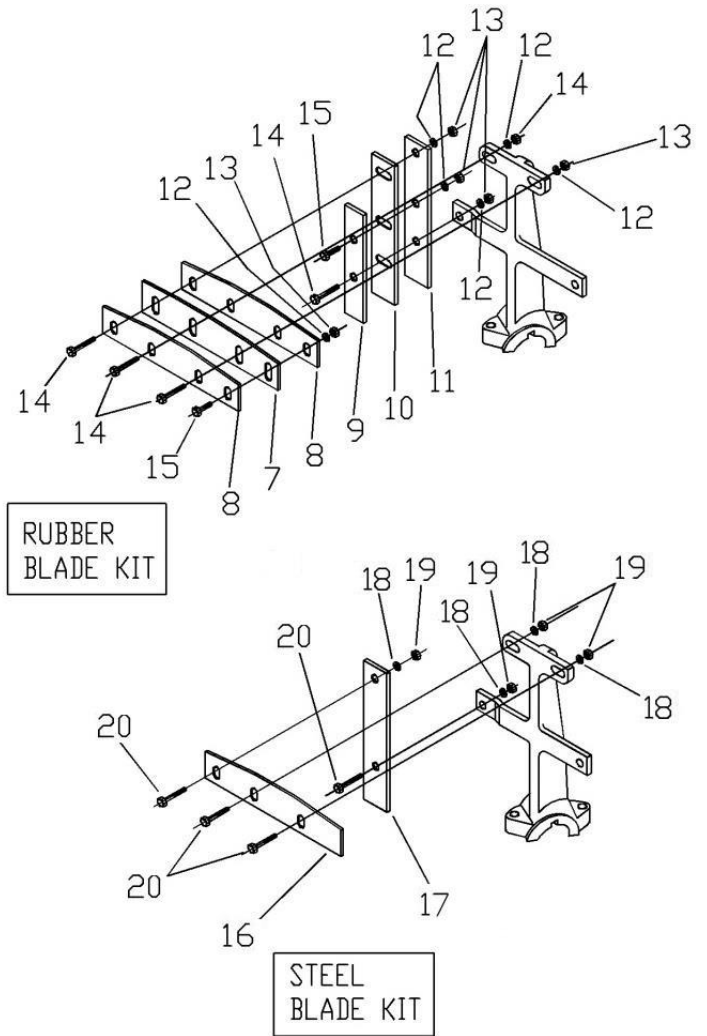
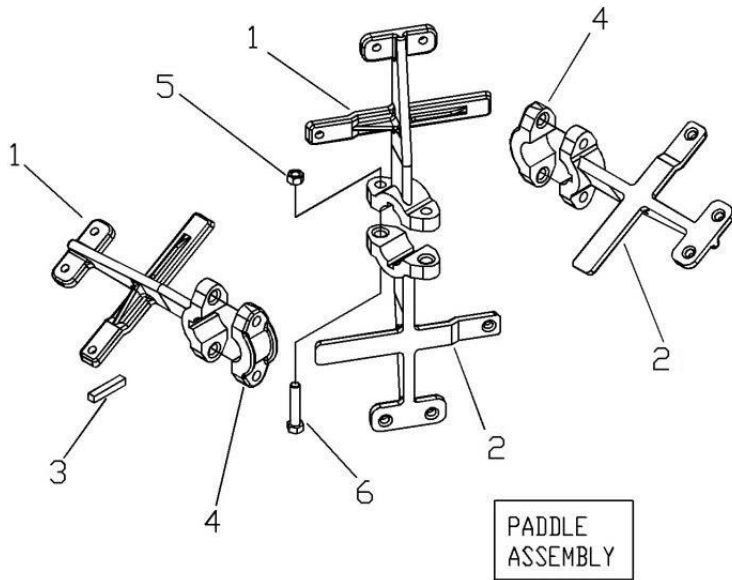
DRUM MMP



DRUM ASSEMBLY				MM6P	MM8P	LISTPRICE
#	SKU #	PART #	DESCRIPTION			
1	0000BA20824	T175	BALL BEARING, 1746208-108 - 110450 - T175 (W/O GRS FITTING)	2	2	\$30.00
2	0200CH01TQ	T485	DRUM PIVOT 4S-S10S / MM8P - T485 - 496070	2	2	\$55.00
3	0200HN01TQ	T486	SEAL FINGER (R2) 3.00 X 1.47 X .13 - T486 - 190854	2	2	\$5.00
4	TCCS038GAL	T114	HEX LOCK NUT 3/8" - 227830 - T114 - C142	30	32	\$1.25
5	0218FG02TQ	T487	DRUM TRUNNION, 4S-10S / MM8P (R3) - T487 - 496080	2	2	\$110.00
6	0218PL03TQ	T488	DRUM SEAL RING, 4S-10S (R4) MM8P - T488 - 496042	2	2	\$9.16
7	0200HN02TQ	T551	DRUM SEAL - 192923 - T551	4	4	\$12.00
8	0218FG01TQ	T489	DRUM SEAL PLATE 4S-10S / MM8P - T489 - 496177	2	2	\$29.76
9	0218AS01TQ	T490	GASKET 4-1/2" DIAM 0.06 THICK 8P/MM8P - T490 - 190751	2	2	\$3.00
10	TOCD038200	T145	HEX BOLT HD, GR5 3/8" X 2" - 226250 - T145 - C158	4	4	\$1.25
11	RNPX038GAL	T112	PLAIN WASHER 3/8" - T112 - C139 - 174986 - 701032 - C140	10	12	\$1.08
12	0218LA01TQ	T491	FRONT OUTSIDE CHANNEL MM6P/6P - 412086 - T491	1		\$250.00
12	0225LA01TQ	T492	FRONT OUTSIDE CHANNEL MM8P/8P - 412177 - T492		1	\$260.00
13	0200CO01TQ	T168	DRUM DUMPING HANDLE LEVER W/ GRIP 4S-12S/MM8P (R1) - T168 - 496224	1	1	\$19.00
14	TOCD038112	T176	HEX BOLT 3/8" X 1-1/2" - T176 - C141 - 226230	6	6	\$1.25
15	TOCD012112	T595	HEX BOLT HD GR5 1/2" X 1-1/2" - 226650 - C303	4	4	\$1.25

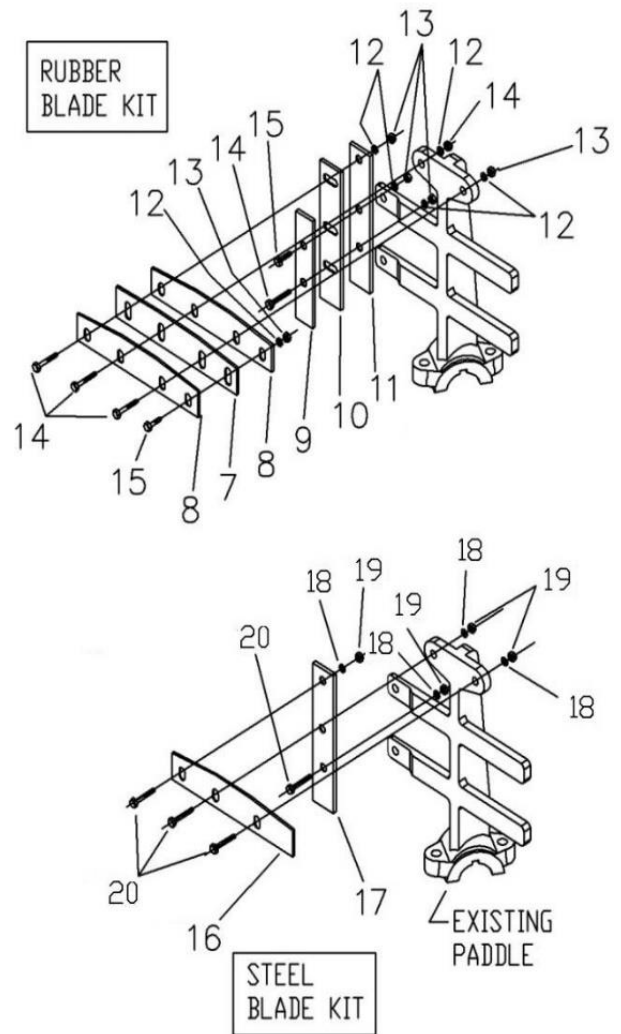
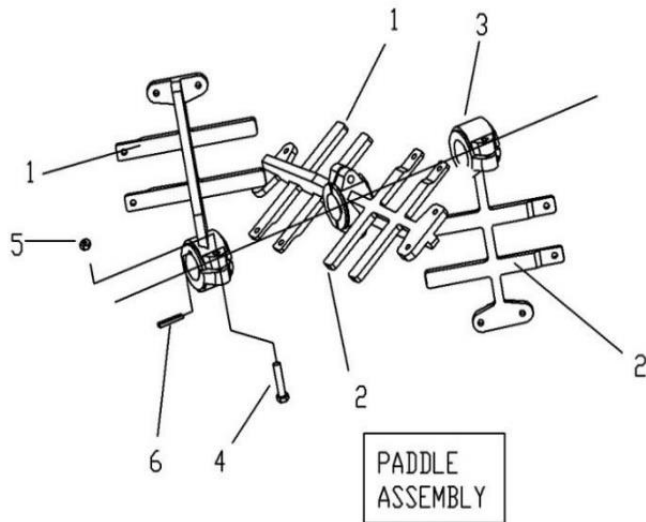
16	0218CO01RJ	T493	GRILL FIXED MM6P/6P - 412095 - T493	1		\$188.50
16	0225CO01RJ	T494	GRILL FIXED MM8P/8P - 412175 - T495		1	\$209.88
17	TOCT014112	T552	BOLT ALLEN HD, 1/4"X 1-1/2" - T552 - 139790	14	14	\$1.23
18	0218CO02RJ	T553	GRILL HINGED MM6P/6P - 412099 - T553	1		\$112.36
18	0225CO02RJ	T554	GRILL HINGED MM8P/8P - 412174 - T554		1	\$152.64
19	0218PL01TQ	T555	SHIM, 4S-10S 1/4" THK (R2) - 496000 - T555 (OPTIONAL)	2	2	\$10.08
20	0000GRH045	T102	DRUM BEARING, GREASE FITTING 45 DEG - T102 - 110689	2	2	\$2.50
21	0218LA02TQ	T556	REAR OUTSIDE DRUM CHANNEL MM6P/6P - 412087 - T556	1		\$250.00
21	0225LA02TQ	T557	REAR OUTSIDE CHANNEL MM8P/8P - 412161 - T577		1	\$260.00
22	0218CR01TQ	T558	PADDLE SHAFT MM6P - T558	1		\$159.00
22	0225CR02TQ	T559	PADDLE SHAFT MM8P - T559		1	\$195.00
23	0218LA03TQ	T560	REAR INSIDE DRUM CHANNEL FILLER 6P/MM6P - 257686 - T560	1		\$139.92
23	0225LA03TQ	T561	REAR INSIDE DRUM CHANNEL FILLER MM8P/8P - 496352 - T561		1	\$139.92
24	TOCL038112	T174	CARRIAGE BOLT 3/8" X 1-1/2" GR2 ZP - 117771 - 117771 - T174	12	12	\$1.08
25	TOCL038200	T562	BOLT, CARRIAGE 3/8 X 2 - 701011 - T562	8	8	\$1.08
26	0218PL02TQ	T563	INNER SEAL PLATE 6P/8P - 412184 - T563	2	2	\$15.90
27	0218LA04TQ	T564	FRONT DRUM FILLER PLATE DRILLED 6P/MM6P - 257685 - T564	1		\$139.92
27	0225LA04TQ	T565	FRONT DRUM FILLER PLATE DRILLED 8P/MM8P - 257685 - T565		1	\$139.92
28	0218PC01TQ	T566	DRUM MM6P / 6PR RAW - T566 - 201447	1		\$350.00
28	0225PC02TQ	T567	DRUM MM8P - T567 - 201448		1	\$450.00
29	RNRX012GAL	T112	SPING WASHER 1/2" - C145 - 176250 - T568 - T112	4	4	\$1.08
30	0218KI01TQ	T569	DRUM ASSY COMPLETE MM6P - T569	1		\$1,600.00
30	0225KI01TQ	T570	DRUM ASSY COMPLETE MM8P - T570		1	\$1,700.00

PADDLE ASSEMBLY MM6P



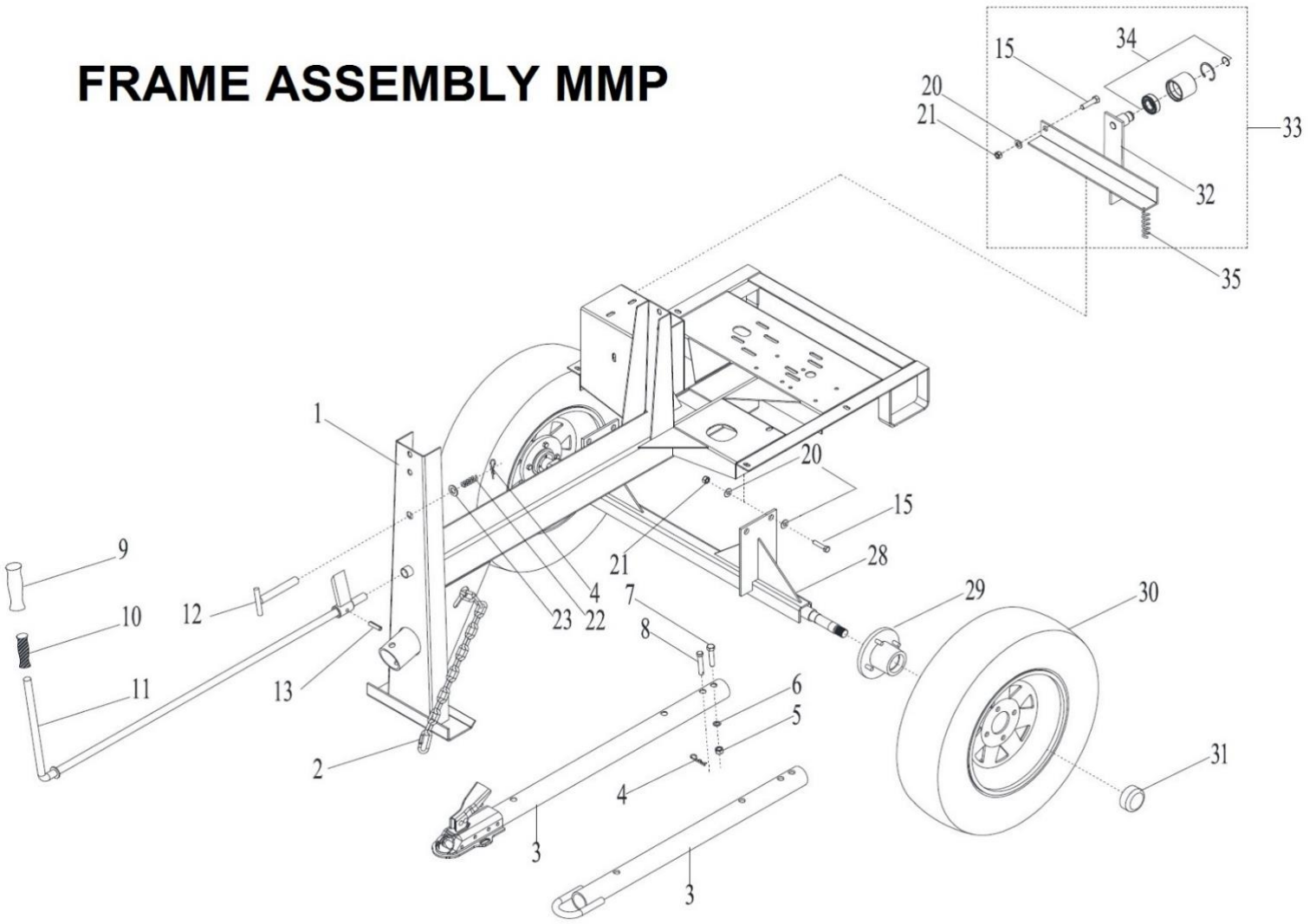
PADDLE ASSEY MM6P						
#	SKU #	PART #	DESCRIPTION	MM6P	MM8P	LISTPRICE
1	0218FG01AS	T571	END PADDLE & CENTRAL PADDLE LEFT 4S/6P/MM6P - T571 - 096019	2	N/A	\$63.33
2	0218FG03AS	T574	END PADDLE & CENTRAL PADDLE RIGHT MM6P - T574 - 096018	2	N/A	\$63.33
3	0220CC2BX	T708	KEY, 3/8" X 1-5/8" - T708	4	N/A	\$1.25
*3	1000CC01ED	T572	KEY 3/8" X 1-3/4" - 701013 - T572 (OLD DIMENSTIONS)	4	N/A	\$1.25
4	0218FG02AS	T573	CAP PADDLE 4S-10S/MMP (R3) T573 - 096010	2	N/A	\$19.08
5	TCCS012GAL	T106	HEX LOCK NUT 1/2" - T106 - 227854 - C304	6	N/A	\$1.25
6	TOCD012300	T481	HEX BOLT HD 1/2" X 3" - 226711 - T481	6	N/A	\$3.00
RUBBER BLADE KIT MM6P						
7	0200HN01AS	T577	WIPER 4S/10S, MMP-35 (R5) - T577 - 190970	4	N/A	\$8.48
8	0218LA01AS	T579	BLADE,4S-10S/MMP, TOP (R2) - T579 - 436290 - 496290	8	N/A	\$11.90
9	0218LA02AS	T580	BLADE, 4S-6SR/MMP, SIDE (R2) - T580 - 436320	2	N/A	\$9.16
10	0218HN01AS	T578	WIPER 4S-6SR, MMP (R4) - T578 - 192680	2	N/A	\$6.36
11	0218LA03AS	T581	BLADE, 4S-6SR/MMP, SIDE (R1) - T581 - 436310	2	N/A	\$9.16
12	RNPX038GAL	T112	PLAIN WASHER 3/8" - T112 - C139 - 174986 - 701032 - C140	44	N/A	\$1.08
13	TCCS038GAL	T114	HEX LOCK NUT 3/8" - 227830 - T114 - C142	18	N/A	\$1.25
14	TOCD038200	T145	HEX BOLT HD, GR5 3/8" X 2" - 226250 - T145 - C158	4	N/A	\$1.25
15	TOCD038112	T176	HEX BOLT 3/8" X 1-1/2" - T176 - C141 - 226230	16	N/A	\$1.25
21	N/A	609802	RUBBER BLADE KIT 4S & 6S/P	1	N/A	\$100.00
STEEL BLADE KIT MM6P						
16	0218PL01AS	T575	BLADE, 4S-6S/MM6P TOP (R3) - T575 - 436280	4	N/A	\$15.57
17	0218PL02AS	T576	BLADE 4S-6SR/MM6P SIDE (R1) - T576 - 436300	2	N/A	\$9.16
18	RNPX038GAL	T112	PLAIN WASHER 3/8" - T112 - C139 - 174986 - 701032 - C140	24	N/A	\$1.08
19	TCCS038GAL	T114	HEX LOCK NUT 3/8" - 227830 - T114 - C142	12	N/A	\$1.25
20	TOCD038112	T176	HEX BOLT 3/8" X 1-1/2" - T176 - C141 - 226230	12	N/A	\$1.25
22	N/A	610550	PADDLE KIT, 4-6S/MM6P	1	N/A	\$330.00

PADDLE ASSEMBLY MM8P

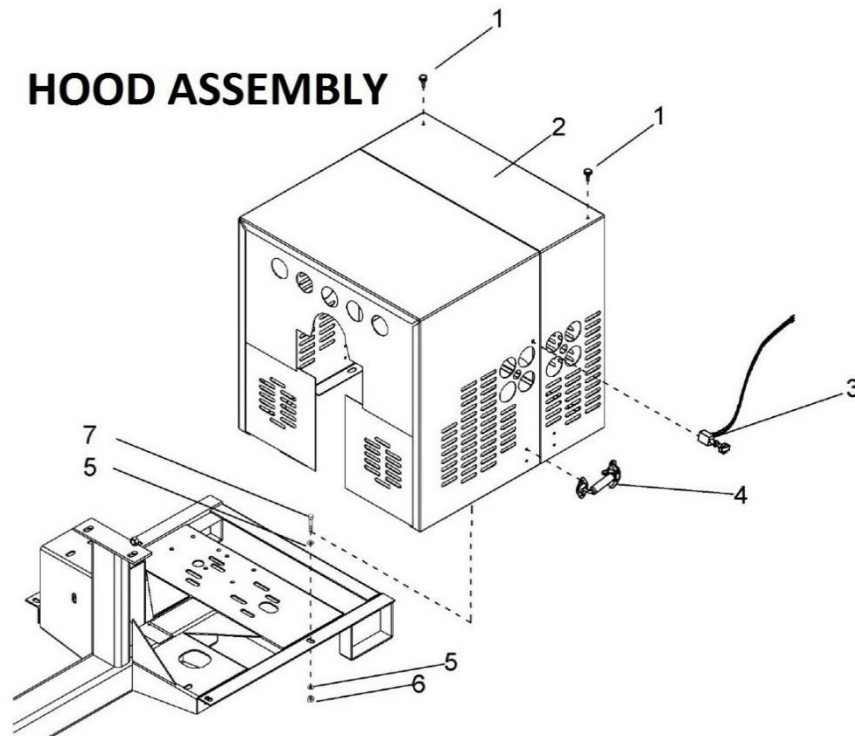


PADDLE ASSEY MM8P						
#	SKU #	PART #	DESCRIPTION	MM6P	MM8P	LISTPRICE
1	0225FG01AS	T582	END & CENTRAL PADDLE 8S-10S/MM8P LEFT - T582 - 096305	N/A	2	\$75.00
2	0225FG02AS	T583	END & CENTRAL PADDLE 8S-10S/MM8P RIGHT - T583 - 096304	N/A	2	\$75.00
3	0218FG02AS	T573	CAP PADDLE 4S-10S/MMP (R3) T573 - 096010	N/A	8	\$19.08
4	TOCD012300	T481	HEX BOLT HD 1/2" X 3" - 226711 - T481	N/A	6	\$3.00
5	TCCS012GAL	T106	HEX LOCK NUT 1/2" - T106 - 227854 - C304	N/A	6	\$1.25
6	0220CC2BX	T708	KEY, 3/8" X 1-5/8" - T708	N/A	4	\$1.25
*6	1000CC01ED	T572	KEY 3/8" X 1-3/4" - 701013 - T572 (OLD DIMENSTIONS)	N/A	4	\$1.25
RUBBER BLADE KIT MM8P						
7	0200HN01AS	T577	WIPER 4S/10S, MMP-35 (R5) - T577 - 190970	N/A	4	\$8.00
8	0218LA01AS	T579	BLADE,4S-10S/MMP, TOP (R2) - T579 - 436290 - 496290	N/A	8	\$10.90
9	0225PL03AS	T586	BLADE, 8S-12SH/MM8P SIDE(R3) - T586 - 496099	N/A	2	\$9.16
10	0218HN01AS	T578	WIPER 4S-6SR, MMP (R4) - T578 - 192680	N/A	2	\$6.36
11	0225PL04AS	T588	BLADE, 8S-12SH/MM8P SIDE (R3) - T588 - 496098	N/A	2	\$9.16
12	RNPX038GAL	T112	PLAIN WASHER 3/8" - T112 - C139 - 174986 - 701032 - C140	N/A	44	\$1.08
13	TCCS038GAL	T114	HEX LOCK NUT 3/8" - 227830 - T114 - C142	N/A	18	\$1.25
14	TOCD038200	T145	HEX BOLT HD, GR5 3/8" X 2" - 226250 - T145 - C158	N/A	4	\$1.25
15	TOCD038112	T176	HEX BOLT 3/8" X 1-1/2" - T176 - C141 - 226230	N/A	16	\$1.25
21	N/A	609910	RUBBER BLADE KIT 8S&P - 10S	N/A	1	\$105.00
STEEL BLADE KIT MM8P						
16	0218PL01AS	T575	BLADE, 4S-6S/MM6P TOP (R3) - T575 - 436280	N/A	4	\$14.42
17	0218PL02AS	T576	BLADE 4S-6SR/MM6P SIDE (R1) - T576 - 436300	N/A	2	\$8.48
18	RNPX038GAL	T112	PLAIN WASHER 3/8" - T112 - C139 - 174986 - 701032 - C140	N/A	24	\$1.06
19	TCCS038GAL	T114	HEX LOCK NUT 3/8" - 227830 - T114 - C142	N/A	12	\$1.23
20	TOCD038112	T176	HEX BOLT 3/8" X 1-1/2" - T176 - C141 - 226230	N/A	12	\$1.23
22	N/A	610555	PADDLE KIT, 8-10S/MM8P	N/A	1	\$415.00

FRAME ASSEMBLY MMP



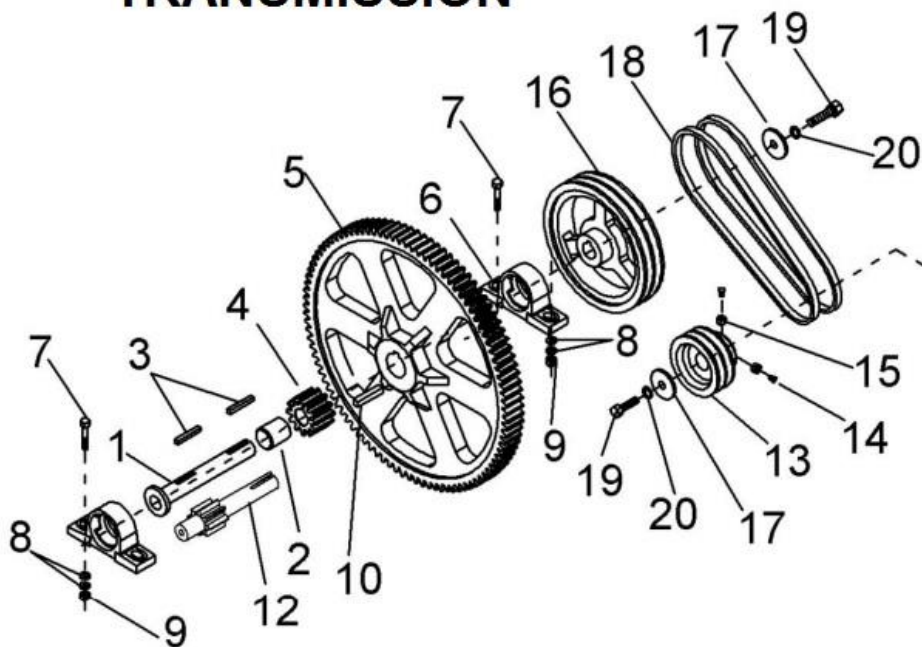
FRAME ASSEMBLY						
#	SKU #	PART #	DESCRIPTION	MM6P	MM8P	LISTPRICE
1	0218CO01CH	T499	FRAME MM6P/6PR - 412089 - T499	1		\$1000.00
1	0225CO01CH	T550	FRAME MM8P/8P - 412163 - T550		1	\$1000.00
2	CAD3516GAL	T501	5/16 SAFETY CHAIN W/ OVAL SNAPS T501 - 609686 - 701012 - CA03316GAL	1	1	\$35.00
3	0000CO03LZ	T118-V	PINTLE HITCH VERTICAL HOLE - 702069 - T118 - C193	1	1	\$80.00
3	0000CO04LZ	T119-V	2" BALL HITCH VERTICAL HOLE - 702070 - T119	1	1	\$80.00
4	0111SR01LZ	T110	3/6" COTTER PIN CP-85H - SR00036EXT - T110 - 134955	1	1	\$1.08
5*	TCFN034GAL	T124	TOWING HITCH, HEX NUT, 3/4 NF - 701028 - T124 - C179 (OBSOLETE)	1	1	\$5.00
5	TCFN058GAL	T124-1	TOWING HITCH, HEX NUT, 5/8 NF - T124-1 - 701033	1	1	\$5.00
6*	RNRX034GAL	T123	TOWING HITCH, SPRING WASHER 3/4" - 174510 - T123 (OBSOLETE)	1	1	\$3.00
6	RNRX058GAL	T123-1	TOWING HITCH, SPRING WASHER 5/8" - T123-1 - 701032	1	1	\$3.00
7*	TOFD034312	T122	TOWING HITCH, HEX HEAD SCREW 3/4" X 3-1/2" - T122 - C148 - 226272 - 701001 (OBSOLETE)	1	1	\$3.00
7	TOFD058312	T122-1	TOWING HITCH, HEX HEAD SCREW 5/8" X 3-1/2" - T122-1 - 701035	1	1	\$3.00
8*	0000CR01LZ	T121	TOWING HITCH, LOCK PIN - T121 - C169 - 496088 - 702078 (OBSOLETE)	1	1	\$10.00
8	TOFD058312-A	T121-1	TOWING HITCH, LOCK PIN - T121-1 - 701031	1	1	\$10.00
9	0000RF01RJ	T166	CONTROL & DUMPING HANDLE GRIPS - 139350 - T166 (ROUND)	1	1	\$10.00
10	0000RF02TQ	T414	ENGAGEMENT HANDLE CHILD HAND GRIP - T414 - 701023	1	1	\$3.33
11	0200CO01CU	T117	ENGAGEMENT CONTROL HANDLE LEVER MM6/MM8 - T117	1	1	\$58.00
12	0200CO01CH	T107	TOWING/DUMPING SPRING LOADED LOCK PIN	1	1	\$7.22
13	00PE038112	T505	CONTROL HANDLE LOCK PIN 3/8 X 1-1/2 - T505	1	1	\$1.08
15	TOCD012134	T189	HEX BOLT HD 1/2" X 1 3/4" - T189 - 226660	7	7	\$3.00
21	TCCS012GAL	T106	HEX LOCK NUT 1/2" - T106 - 227854 - C304	9	9	\$1.25
22	0000RF01CH	T109	TOWING/DUMPING, LOCK PIN SPRING - T109	1	1	\$8.00
23	RNPX034GAL	T108	PLAIN WASHER 3/4" X 1-1/2 - 174996 - T108 - 248277	1	1	\$3.02
28	0200CO03RD	T125-2	STANDARD 46" AXLE MM6-MM12 (NO HUBS) - T125-2	1	1	\$200.00
28	0200CO04RD	T125-3	STANDARD 46" AXLE ASSY MM6-MM12 (INCLUDING HUBS) - T125-3	1	1	\$280.00
29	0200KI03RD	T129-1	WHEEL HUB W/ 1" BRG L44643 & DUST CAP - 702071 - T129 - C135 (NEW STYLE)	2	2	\$75.00
30	0000CO02RD	T137-12	WHEEL & TIRE ASSY 4.8 X 12" - T137-12 - C137 - 431063	2		\$95.00
30	0000CO01RD	T137	WHEEL & TIRE ASSY 165-80 R13" - T137 - 431081 - C136		2	\$115.00
31	0000RF10RD	T136-1	DUST CAP FOR WHEEL HUBS 1.98" (NEW STYLE) - 702087 - T136-1 - 464804	2	2	\$8.00
*	TCMN012GAL	T138	WHEEL LUG NUT 1/2" X 20 - T138	8	8	\$4.00
32	0200CO02CU	T140	IDLER ARM BRACKET - T140 (NO IDLER BEARING)	1	1	\$22.00
33	0200CO04CU	T197	BEARING CLUTCH ASSEY WITH IDLER ARM BRACKET - T197	1	1	\$70.00
34	0200KI01CU	T197-1	BEARING IDLER CLUTCH ASSEMBLY (NO IDLER ARM BRACKET) - T197-1	1	1	\$30.00
35	0000RF01CU	T192	IDLER ARM (CLUTCH) SPRING - T192	1	1	\$9.50



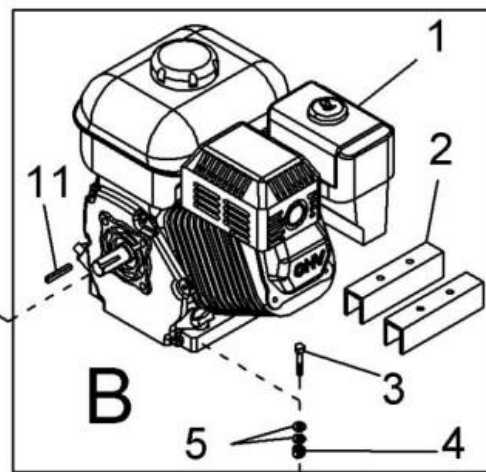
HOOD ASSEMBLY BREAK DOWN

#	SKU #	PART #	DESCRIPTION	MM6P	MM8P	LISTPRICE
1	0000RF01GA	T158	RUBBER SCREW 1/4" FOR SHROUD - T158 - C159 - 201544	2	2	\$3.15
2	0200CO01GA	T157	SQUARE SHROUD ASSEY W/KILL SWITCH MM6-MM10/MMP - T157	1	1	\$300.00
3	1000KI04GA	T193	ENGINE KILL SWITCH ASSEY RED (WITH HARNESS) 701007 - T193	1	1	\$29.00
3	0200KI01GA	T195-1	ENGINE N.O KILL SWITCH RED (NO HARNESS) - 816769AS - 112500 - T195-1 - 290100	1	1	\$18.00
4	0000RF02GA	T160	SHROUD HOOK ASSEMBLY - T160 - C161 - 701004 - 201543	2	2	\$9.00
5	RNPX038GAL	T112	PLAIN WASHER 3/8" - T112 - C139 - 174986 - 701032 - C140	8	8	\$1.08
6	TCCS038GAL	T114	HEX LOCK NUT 3/8" - 227830 - T114 - C142	4	4	\$1.25
7	TOCD038112	T176	HEX BOLT 3/8" X 1-1/2" - T176 - C141 - 226230	4	4	\$1.25

TRANSMISSION



ENGINE



TRANSM. ASSEY BREAK DOWN

#	SKU #	PART #	DESCRIPTION	MM6P	MM8P	LISTPRICE
1	0200CR01TR	T146	TRANSMISSION SHAFT 1" X 7-1/4" - T146	1	1	\$15.00
2	0200TU01TR	T205	TRANSMISSION BUSHING 1" X 1-5/8" MM6- MM10 - T205	1	1	\$13.73
3	0200CC03TR	T202	KEY 1/4" X 1-7/8" - T202 - 432340	2	2	\$1.25
3	0170CC01MO	T483	KEY 1/4 X 1-1/4 - 701027 - C152 - T483 - 0000CU01TR	2	2	\$1.25
4	0200CR04TR	T149	12 TH TRANSMISSION PINION 2-3/8" X 2 1/2" - T149	1	1	\$30.00
5	0200FG02TR	T151	96 TH TRANSMISSION BULL GEAR 14" - T151	1	1	\$165.00
6	00CHPI2100	T150	TRANSMISSION PILLOW BLOCK 1" - T150	2	2	\$60.00
7	TOCD038200	T145	HEX BOLT HD, GR5 3/8" X 2" - 226250 - T145- C158	2	2	\$1.25
8	RNPX038GAL	T112	PLAIN WASHER 3/8" - T112 - C139 - 174986 - 701032 - C140	4	4	\$1.08
9	TCCS038GAL	T114	HEX LOCK NUT 3/8" - 227830 - T114 - C142	2	2	\$1.25
10	0200CC01TR	T120	BULL GEAR KEY 3/8" X 2" - T120	1	1	\$1.27
11	0200CU02TR	T147	ENGINE KEY 1/4 FOR 8HP & 13HP - T147	1	1	\$1.27
11	0200CU03TR	T147-1	ENGINE KEY 3/16" FOR 5HP - C514 - T147-1	1	1	\$1.27
12	0200CR03TR	T1002	ELEC TRANSM PINION SHAFT 7-1/4" X 1" W/ 1-1/2" 8TH PINION - T1002	1	1	\$58.00
13	POFG3341002R	T154	PULLEY 3-3/4" CAL 1" X 2 GROOVES (2AK39X1) - 430990 - 702010 - T154	1	1	\$50.00
13	POFG3340342R	T154-1	PULLEY ENGINE, 2AK39 X 3/4" - 407790 - T154-1 - 702025	1	1	\$50.00
13	POFG2120582R	T154-3	PULLEY MOTOR, 2-1/2" X 5/8" 2 GROOVES (2AK2558) - T154-3	1	1	\$40.00
13	POFG2120782R	T1000	PULLEY MOTOR, 2-1/2" CAL 7/8" 2 GROOVES - T1000 - 239365	1	1	\$40.00

13	POFG2121182R	T1001	PULLEY MOTOR, 2-1/2 CAL 1-1/8 X 2 GROOVES - T1001	1	1	\$40.00
14	OPCQ038100	T203	SET SCREW, 3/8 X 1" FOR 8HP - 13HP ENGINE PULLEY - T203	2	2	\$2.55
14	OPCQ038114	T203-1	SET SCREW 3/8" X 1-1/4" FOR 5HP ENGINE - C156 - OPCQ038114 - T203-1	2	2	\$2.55
15	TCCN038GAL	T410	HEX NUT 3/8 NC - T410 - C142 - 227814	2	2	\$1.25
16	POFG8001002R	T153-2	PULLEY 8" CAL 1" 2 GROOVES - T153-2	1	1	\$40.00
17	0200PL01FC	T152	MM PADDLE SHAFT PLAIN WASHER 3/16" - T152 - T162	1	1	\$3.00
18	0000BNAX37	T155	GAS ENGINE TRASMISSION BELT, AX37 - T155	1	1	\$20.00
19	TOFD038100	T116	HEX BOLT 3/8" X 1" NF - 226210 - T116	2	2	\$1.25
20	RNRX038GAL	T113	LOCK WASHER 3/8" - T113 - C144 -176230	2	2	\$1.08

ENGINE ASSEMBLY						
#	SKU #	PART #	DESCRIPTION	MM6P	MM8P	LISTPRICE
1	202004M	T171	ENGINE HONDA 5.5 HP GX160UQXE6 WITH 6:1 REDUCER - T171	1		\$650.00
1	202009M	T304	ENGINE HONDA 8 HP O/A GX240 WITH 6:1 REDUCER - T304	1	1	\$945.00
2	0201PL01MO	T165	RAISING HEIGHT BRACKET FOR 5.5HP ENGINE - T165	2		\$25.00
2	0201PL02MO	T484	RAISING HEIGHT 2" BRACKET FOR ELECTRIC MOTOR - T484	2		\$25.00
3	TOCD056300	T201	HEX BOLT HD 5/16" X 3" - 701009 - T201	4		\$1.08
3	TOCD038200	C158	HEX BOLT HD, GR5 3/8" X 2" - 226250 - T145- C158		4	\$1.25
4	TCCS056GAL	T148	HEX LOCK NUT 5/16" - T148 - 227821	4		\$1.25
4	TCCS038GAL	C142	HEX LOCK NUT 3/8" - 227830 - T114 - C142		4	\$1.25
5	RNPX056ESP	T198	PLAIN WASHER 5/16 I.D. X 3/4 O.D. - T198	4	8	\$1.08
5	RNPX038GAL	C139	PLAIN WASHER 3/8" - T112 - C139 - 174986 - 701032 - C140	1	1	\$1.08
*	0000RF03GA	T299	DECAL KIT & USER MANUAL /PARTS BREAKDOW MM - T299	1	1	\$35.00
*		T299-A	DECAL KIT MORTAR MIXER - T299-A (AS FOR DIGITAL VERISON)	1	1	\$25.00

Octavio Chavez
North America Sales Manager

manager@tkequip.com
www.tkequip.com



Jaime Ortiz
Office: (956) 796-9411

Fax: (956) 462 2500

Parts & Customer Service
parts@btmequipment.com
service@btmequipment.com